



REGIS
Catholic Schools

Admissions Guide 2026-27



**Learning Today,
Leading Tomorrow**

[RegisCatholicSchools.com](https://www.RegisCatholicSchools.com)

Our Core Values

LIVING FAITH

- We believe the Holy Spirit inspires all that we do
- We embrace the Gospel of Jesus Christ and encourage a personal relationship with God the Father
- We acknowledge the diversity of others and their beliefs

ACCEPTING RESPONSIBILITY

- We lead through example and are accountable for our actions
- We believe and promote our Catholic values
- We affirm good judgment and trustworthy behavior

PROMOTING TEAMWORK

- We communicate honestly, openly, and consistently
- We build community by cooperating in the classroom and in all co-curricular activities
- We work together to achieve common goals with all members of our school and parish community

ACHIEVING EXCELLENCE

- We respond to challenges and pursue continuous improvement
- We nurture a love of learning that will last a lifetime
- We strive for academic growth in all subject areas

INSPIRING LEADERSHIP

- We prepare students for leadership and service in church and society
- We celebrate integrity and seek fair choices
- We honor the Regis Catholic Schools' tradition...

Learning Today, Leading Tomorrow

OUR MISSION

Regis Catholic Schools is dedicated to educating students of all faiths in a Catholic, Christ-centered environment. We are united by Our Core Values of **Living Faith**, **Accepting Responsibility**, **Promoting Teamwork**, **Achieving Excellence**, and **Inspiring Leadership**.

OUR VISION

Inspired by our Catholic tradition, Regis Catholic Schools will provide the highest quality programs possible from early childhood through high school to nourish the body, mind, and soul of each student, and help them become faithful servants of Christ the King.



Welcome

The essence of an education at Regis Catholic Schools is reflected in Our Core Values, which are integrated into our curriculum in a variety of ways. We depend on these values to not only inspire quality instruction, but to serve as a guide for our students to follow in life. *Living Faith, Accepting Responsibility, Promoting Teamwork, Achieving Excellence,* and *Inspiring Leadership* are reflections of the importance of our Catholic identity in an obligation to live a faith-filled life dedicated to excellence and service.

As a Catholic school system, we appreciate the trust you place in us. We are honored to have the opportunity to teach in partnership with our parents and the most valuable gift from God, their children. Regis Catholic Schools is known for its high academic and co-curricular success. In addition, each year we complete a number of community service projects that benefit the citizens of the Chippewa Valley and beyond. This is all done with Our Core Values as a guide.

As you look through this information, please do not hesitate to contact us with any questions you may have. We would be happy to answer them. We understand there is a unique commitment to sending your child to Regis Catholic Schools. Our buildings have a positive, values-based environment that fosters a growth in mind, body, and spirit.

We invite you to join together with us on your child's educational, faith-filled journey.

Gratefully,



Paul Pedersen '89
President

*The mind of the intelligent
gains knowledge, and the ear
of the wise seeks knowledge.
Proverbs 13:15*



Why Regis Catholic Schools?

FAITH. VALUES. ACADEMIC EXCELLENCE.

What makes us special? We are a Christ-centered, Catholic school system that focuses on educating the whole child -- mind, body, and spirit. Our school system is known for its excellent educational offerings and for developing community leaders.

Regis is a family. Our administrators, educators, and support staff operate as a community to provide the best learning experience for our students.

Our elementary schools have a strong core academic program, complemented with well-balanced enrichment classes. In addition to a regular classroom teacher for all K-5 students, we have specialized teachers who teach art, Spanish, phy-ed, guidance, technology, and library.

Regis Middle School is a smaller middle school where students don't get lost in the shuffle. We believe that teaching the whole child, especially during this unique stage of adolescent development, will help the student grow and learn in ways that academics alone cannot.

Regis High School is committed to offering demanding and interactive academic programs. Regis offers advanced placement, honors, college credit, and distance learning courses for students who want to be challenged further. Regis also offers tutoring and individual support for students who need additional help with subjects.

We require all of our students to complete community service hours and to learn about the importance of serving the local community.



Student Transit offers busing for families in the Eau Claire Area School District and the Altoona School District.

Open To All Faiths

REGIS CATHOLIC SCHOOLS IS OPEN TO FAMILIES OF ALL FAITHS WHO IDENTIFY WITH OUR CORE VALUES. WHILE RESPECTING THE DIVERSITY OF OTHERS AND THEIR BELIEFS, WE TEACH THE BIBLE AND MORALITY FROM OUR CATHOLIC TRADITION.

In our schools, all students are expected to attend and participate in prayer, the Mass, and religious education classes. During the course of the year, students participate in special activities that help us celebrate the different seasons of the Catholic Church. Students celebrate the true meaning of Christmas and Easter, observe the seasons of Advent and Lent, and learn about and honor the saints, holy men, and holy women who are role models for us in our journey of faith.



For non-Catholic students, the focus is on deepening personal relationships with Jesus Christ and developing a greater understanding between Christian churches.

OUR SCHOOLS DO NOT TRY TO CONVERT STUDENTS OF OTHER DENOMINATIONS.

"The chance to have a small environment was important for all of our kids, along with the opportunity to have values and faith as part of their day-to-day experience. My kids love it here...and as parents, we do, too!"



Nicole Berschback | Parent

Our Schools

EARLY CHILDHOOD PROGRAMS



REGIS
Child Development



GENESIS
Child Development Center

Our facilities provide a Christian environment for children ages 6 weeks through 12 years. A hands-on approach to learning is the basis of a curriculum that engages and excites young children to grow and develop.



- Open Monday-Friday from 6:30 a.m. to 6:00 p.m.
- State licensed centers
- Caring, nurturing teachers who are all certified and trained in CPR, First Aid, and SIDS prevention
- Ongoing child assessments with parent/teacher conferences twice per year
- Age-appropriate curriculum
- Outdoor and indoor play areas
- Safe and secure buildings
- 4-year-old kindergarten sessions





ST. JAMES
Elementary School



ST. MARY'S
Elementary School

FAITH-BASED PRESCHOOL & 4K PROGRAMS

Our preschool and 4K classrooms at St. James Elementary School and St. Mary's Elementary School are bright and engaging! We offer play-based learning in a faith-filled environment as your little one prepares for kindergarten.

Full-Day 4K Program | St. James Elementary School

This full-day 4K class runs Monday - Friday from 8:30 a.m. to 3:30 p.m. Students must be 4 years old on or before September 1 and potty trained. Before/After School Care offered for an additional fee and based on availability.

3 Year Old Preschool | St. Mary's Elementary School

This preschool class is offered on Mondays and Wednesdays OR Tuesdays and Thursdays from 8:30 to 11 a.m. Students must be 3 years old on or before September 1 and potty trained.

Half-Day 4K Program | St. Mary's Elementary School

This 4K class runs Monday - Thursday from 8:30 to 11:45 a.m. Students must be 4 years old on or before September 1 and potty trained.

CHILD DEVELOPMENT CENTER 4K PROGRAMS

Our Regis Child Development Center and Genesis Child Development Center offer 4K education as a partner with the Eau Claire Area School District.

Regis Child Development Center 4K Program

The Regis Child Development Center has two Eau Claire Area School District 4K classes; one morning and one afternoon. The classes are Monday - Thursday and wrap-around care is available for a fee.

Genesis Child Development Center 4K Program

The Genesis Child Development Center has two Eau Claire Area School District 4K classes; one morning and one afternoon. The classes are Monday - Thursday and wrap-around care is available for a fee.



Our Schools

ELEMENTARY SCHOOLS (GRADES K-5)



IMMACULATE
CONCEPTION
Elementary School



ST. JAMES
Elementary School



ST. MARY'S
Elementary School

As fully-accredited Catholic elementary schools, we strive to make Christ the center of all that we do. Our kindergarten through 5th grade students participate in daily religion lessons, attend all-school Masses, and engage in monthly service projects inspired by the virtues.

We believe you will find our schools to have a family-oriented environment with dedicated staff ready to meet the individual needs of our students. As a school community, we partner with families to help every child reach their full potential and grow in mind, body, and spirit. The partnership between home and school is what makes our schools truly remarkable.

Why send your child to one of our elementary schools?



STANDARDS BASED INSTRUCTION

Regis Catholic Schools uses state standards in all content areas including mathematics, English language arts, science, social studies, art, music, technology, physical education, guidance, and exploratory Spanish. Our teachers use current curricular resources to enrich the learning environment for all students.



SMALL CLASS SIZES

With an average classroom ratio of 16:1, teachers are able to give individual attention to each student, meeting them where they are physically, emotionally, academically, and spiritually.

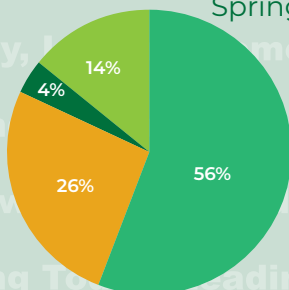


DATA-DRIVEN

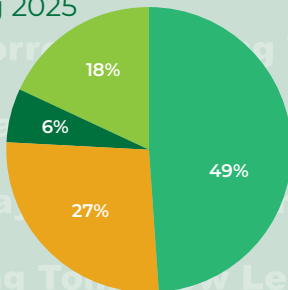
Regis Catholic Schools utilizes standardized and normed benchmark test results to develop learning goals for each student.

Regis Catholic Schools Wisconsin Forward Exam Results

Spring 2025



Elementary Schools
English Language Arts



Elementary Schools
Mathematics

Advanced Meeting Approaching Developing



BEFORE/AFTER SCHOOL CARE

As a convenience for our Regis Catholic Schools elementary school families who need care outside of the regular school date, Before/After School Care is available for an additional cost. (Care is not guaranteed and spots are filled on a first-come, first-serve basis once enrollment is open.) Please contact your child's school office for more information.



CHRIST-CENTERED

Our faith-filled school environment provides our students with the moral compass to handle the challenges and demands of today's society.



COMMUNITY SERVICE

Students are encouraged to contribute to society by donating their time, talents, and treasures during monthly service projects.



FAMILY ENGAGEMENT

As parents are the primary educators of our students, we believe the connection between home and school is essential to student success. There are various volunteer opportunities for families throughout the year and weekly communications are distributed.



Our Schools

MIDDLE SCHOOL (GRADES 6-8)



REGIS
Middle School

The middle school years are a crucial time for social and emotional development.

During this growth stage, students are gaining independence and are beginning to make choices for themselves.

Regis Middle School understands that relationships and rigor go hand-in-hand. Our teachers create strong relationships with our students, naturally enhancing learning motivation. Our Christ-centered classrooms set high academic standards, promote self-discipline, and provide your child with a loving environment to nurture their social, emotional, and spiritual well-being.



Why send your child to Regis Middle School?



ACADEMIC EXCELLENCE

Regis Middle School sets the educational foundation to excel in challenging high school courses. A strong core curriculum has been established through our middle school grade level objectives, which can be found online at

RegisCatholicSchools.com/parents-students/academics/



SMALL CLASS SIZES

Our classroom ratio of an average of 20:1 allows students to engage in hands-on learning and cooperative experiences. It promotes student engagement and allows for opportunities to differentiate learning.



POSITIVE STUDENT-ADULT RELATIONSHIPS

Small class sizes allow our teachers to create genuine connections with students built on trust.

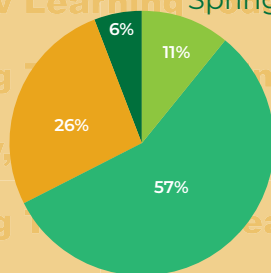


CHRIST-CENTERED

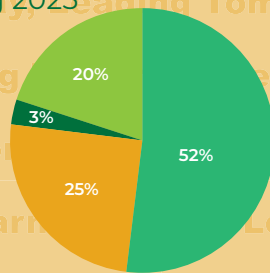
Students are provided with spiritual nourishment through weekly Mass, daily prayer, and annual retreats.

Regis Catholic Schools Wisconsin Forward Exam Results

Spring 2025



Middle School
English Language Arts



Middle School
Mathematics



Advanced



Meeting



Approaching



Developing

One of the greatest gifts we can give our children is an education that supports the whole child.



COMMUNITY SERVICE

Community service encourages students to connect with their community and give back. It allows students to develop civic responsibilities and gain a richer perspective on our world. Regis students perform 1,600+ hours of community service annually.



CO-CURRICULAR OPPORTUNITIES

A vast assortment of athletics, clubs, and social events provide students with leadership opportunities.



TECHNOLOGY

Students are issued personal Chromebooks and taught to use technology responsibly. Teachers routinely use technology to enhance and extend learning objectives within their classrooms.



"Regis has provided me with an opportunity to grow with God."

Isaac C. | Class of 2031

Our Schools

HIGH SCHOOL (GRADES 9-12)



Regis High School offers an outstanding education while supporting values that lead to a lifetime of service and leadership habits. Our teachers prepare students for the rigor of college-level courses by creating a solid foundation of writing skills and critical thinking.

Our Christ-centered instruction provides students with the moral compass to stand up for what they believe in and emotionally handle the transition to higher education.



Why send your child to Regis High School?



RIGOROUS ACADEMICS

Students are encouraged to take college-level courses that provide dual high school and college credit. Our rigorous academic standards translate to high college placement rates. (*Courses offered include AP, Distance Learning, CVTC Academy, Early College Credit, and Start College Now.*)



SMALL CLASS SIZES

With an average classroom ratio of 17:1, students are provided with a greater level of individual attention within their classrooms.



PERSONAL ATTENTION

Students plan their schedules with their future goals in mind. They can meet 1:1 with staff to schedule courses based on their interests and post-high school plans.



DATA-DRIVEN

Regis High School students consistently score higher than the state average on ACT testing. Higher test scores and a competitive average GPA provide our students with more post-high school options.



"Regis provides me with many great things as a student such as rigorous athletic programs, thorough classes, and an amazing community that supports me in everything I do."

Dominic S. | Class of 2026



REGIS
Catholic Schools

5-Year **ACT** Scores

Graduation Year	REGIS Total Tested	REGIS Composite Score	STATE Composite Score
2025	49	21.9	19.4
2024	41	22.7	19.4
2023	43	22.0	19.4
2022	50	22.6	19.4
2021	53	22.0	20.0

CLASS OF 2025 AVERAGE GPA: 3.54



CHRIST-CENTERED

Our faith-filled school environment provides our students with the moral compass to handle the challenges and demands of adulthood. Students attend Mass weekly, pray daily, and attend annual retreats.



COMMUNITY SERVICE

Students are encouraged to contribute to society by completing service hours. Our high school students collectively perform 11,500+ hours per year. In conjunction with demanding academics, Regis High School instills the value of service to others.



TECHNOLOGY

Through the use of 1:1 Chromebooks, students at Regis High School have consistent access to technology. Learning to use technology appropriately and effectively is essential to educational success and workforce development.



ATHLETICS

As with our academics, our athletes are supported within our system. Our coaches are part of our school and support the nurturing of the whole child in body, mind, and spirit. Our athletes have a long-standing record of success.

Living Faith

OUR FAITH INSPIRES US TO SERVE OTHERS.

Each year, students from all age levels participate in ongoing community service projects and activities. They provide countless hours of service in our community and raise thousands of dollars for various local, national, and international needs.

Our students at all grade levels participate in religious retreats throughout the year. Our junior and senior students experience an immersive Kairos Retreat experience filled with community, shared witness, prayer, and reflection.

"Kairos brought the Holy Spirit back into my son. It is a truly remarkable spiritual journey for Regis students to partake in!"

Becky Semling | Parent



Regis Catholic Schools is financially and spiritually supported by the following local Catholic parishes.

Immaculate Conception | Eau Claire

Newman | UW-Eau Claire

Sacred Heart of Jesus –St. Patrick | Eau Claire

St. James the Greater | Eau Claire

St. Olaf | Eau Claire

St. Mary's | Altoona



servafidem
2TM 47

WE ARE BLESSED TO OFFER A BEAUTIFUL PROGRAM AT REGIS HIGH SCHOOL: SERVA FIDEM, WHICH MEANS “KEEP THE FAITH.”

This ministry is a special opportunity for our students to deepen their relationship with Jesus, grow in their Catholic faith, and experience the power of friendship and mentorship.

High school is such an important time in a young person's life. It's a time when they need strong role models and a supportive community to help guide them through challenges and joys. Serva Fidem was created to provide that kind of support, rooted in the love of Christ.

Through Serva Fidem, students have the chance to join small groups where they can:

- Build meaningful friendships with their peers.
- Learn about their faith in a personal, encouraging setting.
- Be mentored by strong Catholic leader who prays for and supports them.

Each small group meets weekly, creating a space where students can feel known and loved while growing closer to Jesus.



“One of the most important aspects of one's spiritual life is holding onto one's faith with consistency. In order for this to happen, there must come many tiny inflection points in one's life. Yet these moments cannot happen without a significant inflection point. Serva Fidem serves as one of those major moments.”

- Sal Martin | Serva Fidem Mentor



College

Each student's education is the foundation for a strong journey leading to adulthood. Students at Regis High School have valuable opportunities to receive an education that will prepare them thoroughly for post-secondary success. By remaining grounded in Christ, along with hard work and a positive attitude, students have the tools needed for lifelong success, both personally and professionally!



College



"Attending Regis is a wonderful opportunity to be part of a small school environment where every student is known personally and nurtured to find belonging in a tight-knit community. It is a true joy to teach in an environment where every child comes from a family that values the well-rounded education that a private school has to offer."

Michael Bruning | Teacher



Preparation

Students at Regis High School are strongly encouraged to take advantage of the excellent academic course offerings available by challenging themselves to enroll in classes that align with their God-given strengths and passion. Being involved and strongly encouraging academic persistence with challenging coursework is one of the best ways to ensure success for a student's next steps in their journey.

It is important for you to know that Regis High School offers many college-level rigor courses that provide dual high school and college credit. We challenge every student to take one or more of these college-level classes during their high school experience.

credit opportunities include:

ADVANCED PLACEMENT COURSES

These are college-level courses taught within our building or online through Wisconsin Virtual School. Students may receive college credit if they score a 3, 4, or 5 on AP Exams. Credit varies by post-secondary institution. Regis currently offers 22 AP Course options.

Courses Include: AP Literature, AP Chemistry, AP U.S. History, AP Physics

DISTANCE LEARNING COURSES FOR COLLEGE CREDIT

These courses may be offered through CVTC, UW-Eau Claire, or local Wisconsin high schools. Students enrolled in college-level courses are eligible for both college and high school credit.

College Transfer Courses Offered at Regis High School Campus Include: Spanish 1, Spanish 2, Calculus & Analytic Geometry 1, Medical Terminology

CVTC ACADEMY

Students who successfully complete an Academy earn both high school and college credits.

Examples of Academy Programs Include: Certified Nursing Assistant, Culinary Management, Emergency Medical Technician, HVACR, Residential Construction, Welding

EARLY COLLEGE CREDIT AND START COLLEGE NOW PROGRAMS

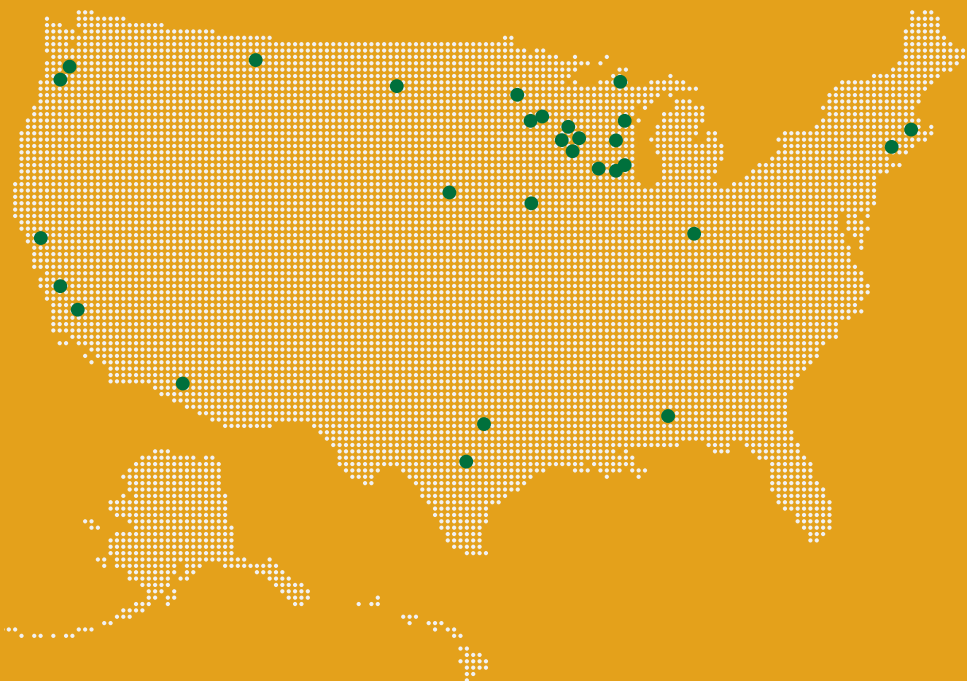
Early College Credit Program allows Wisconsin high school students to take one or more courses at an institution of higher education for high school and college credit. Start College Now allows junior and senior students to take courses at a technical college.

Our Graduates

REGIS HIGH SCHOOL GRADUATES

ATTEND PRESTIGIOUS COLLEGES AND UNIVERSITIES
BOTH LOCALLY AND AROUND THE COUNTRY.

- Arizona State
- Boston College
- Creighton University
- Drake University
- Dunwoody College of Technology
- Embry-Riddle
Aeronautical University
- Everett Community College
- Marquette University
- Milwaukee School of Engineering
- Michigan Tech
- Montana State University
- Iowa State University
- Samford University
- St. Norbert College
- Texas Christian University
- UC - Berkley
- UCLA
- UW-Eau Claire
- UW-Green Bay
- UW-Madison
- UW-Milwaukee
- UW-River Falls
- UW-Stevens Point
- UW-Stout
- University of Mary
- University of Minnesota
- University of Notre Dame
- University of San Francisco
- University of St. Thomas
- University of Texas at Austin
- University of Washington
- Viterbo University
- West Point
- ...and more!



Class of 2025



Graduation Rate



**Attended a College,
University or Technical
College**



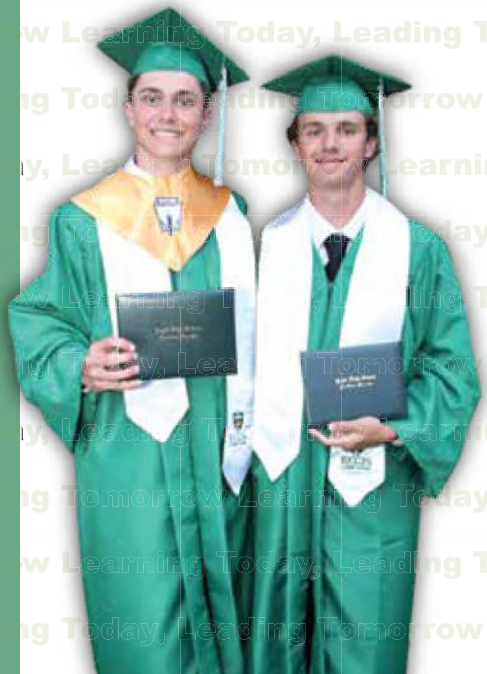
**Felt They Received
Challenging Subject Matter
at Regis High School**



**Felt Their Teachers
Had High Expectations
for Quality Work**



**Participation in School
Activities & Athletics**



Our Activities



REGIS CATHOLIC SCHOOLS OFFERS A NUMBER OF ATHLETIC AND CO-CURRICULAR PROGRAMS. THESE GIVE STUDENTS AN OPPORTUNITY TO EXPLORE THEIR INTERESTS AND SHOWCASE THEIR TALENTS.

REGIS MIDDLE SCHOOL

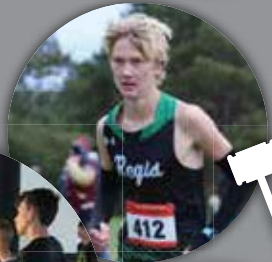
Athletics

Girls Volleyball (Grades 5-8)
Boys & Girls Basketball (Grades 5-8)
Dance (Grades 6-8)
Wrestling (Grades 6-8)
Boys & Girls Cross Country (Grades 6-8)
Boys & Girls Tennis (Grades 6-8)
Boys & Girls Track & Field (Grades 6-8)
Football (Grades 7-8)
Boys & Girls Soccer (Grades 6-8)



Co-Curricular Activities

Battle of the Books
Brains & Brawn
Cribbage Club
Chess Club
FIRST LEGO League
Forensics
Pep Club
SAFE



& Athletics

REGIS HIGH SCHOOL

Boys Athletics

**Baseball, Basketball, Cross Country,
Football, Golf, Hockey, Soccer, Tennis, Track & Field, Wrestling**

Girls Athletics

**Basketball, Cross Country, Golf, Soccer, Softball, Tennis, Track
& Field, Volleyball**

Co-Curricular Activities

**Academic Challenge
Campus Ministry
Dance Team
Environmental Club
Forensics
Math Team
National Honor Society
Pep Club
Pro-Life
SAFE
Student Council
Tech Club
YLEC**



Our newly renovated gymnasium on the Regis campus stands as a centerpiece for success. It is a place where students build teamwork and school spirit while prioritizing their physical health. It is also a space for our community to come together for fun and fellowship.



Our Faculty

OUR DEDICATED TEACHERS AND STAFF ARE ENTHUSIASTIC, ACCOMPLISHED, AND CARING EDUCATORS.

They are committed to helping and supporting your child in the learning process with individual attention and group exploration.

Regis Catholic Schools has a dynamic and dedicated leadership team working behind-the-scenes to provide your child a great education. They care deeply about your student's success and strive each day to do what is best for them and for your family.

In addition, we are home to a friendly team of support staff. From administrative assistants to custodians – they are all part of our Regis Catholic Schools family.

"Our students, staff, and administrators are encouraged to thrive in this faith-based environment, and I have a peace teaching here that I haven't experienced in other schools."

Nan Falbo | 4th Grade Teacher



Parent Involvement

PARENTS ARE THE FIRST AND MOST IMPORTANT EDUCATORS IN A CHILD'S LIFE AND ALL OF OUR SCHOOLS VALUE AND APPRECIATE THE STRONG PARTNERSHIP WE HAVE WITH OUR FAMILIES.

Parent involvement is the cornerstone of our community. We welcome and encourage partnerships at our schools and in our classrooms. Not only does this give parents the opportunity to actively engage in their child's education, but it also fosters a strong connection between home, school, and our faith-based mission.

These opportunities also allow our families to get to know each other and build strong relationships as the years progress.

Academically, we foster a collaborative environment where parents and teachers work together to enhance the educational experience for our students. We strive to take a proactive approach, building strong, personal relationships with families to ensure parents are informed and involved in their child's academic journey.



"The partnership between parents and educators at Regis Catholic Schools is essential for creating a consistent environment that nurtures both academic and spiritual growth."

Benjamin & Karla Harris | Parents



REGIS
Catholic Schools

Our Organization

REGIS CATHOLIC SCHOOLS ADMINISTRATION

*Regis Catholic Schools is led by the President.
That person has two main areas of focus.*

1. System Administration & Comprehensive Advancement

Under the direction of the President, the Regis Catholic Schools Central Office provides for the financial management, financial advancement, enrollment management, communications, personnel administration, and general operations of Regis Catholic Schools.

2. Education Administration

Each school is served by a principal and the early childhood programs are led by an administrator. Those people work in collaboration under the direction of the Regis Catholic Schools President. They are responsible for the daily operation of their buildings and directly serve the staff, students, and parents of Regis Catholic Schools.

EDUCATION COMMISSION

The Regis Catholic Schools Education Commission provides input and guidance on various topics and issues to the system President, Dean, and supporting parishes. It serves as an advisory body and does not make decisions regarding school matters.

Regular members of the Education Commission include the Dean, supporting Pastors, the Regis Chaplain, the Regis Catholic Schools President, school administrators, one representative from each supporting parish, and a representative from the Regis Catholic Schools Foundation.

FINANCE COMMITTEE

The Finance Committee reviews financial statements and budgets, provides solutions to financial challenges and facility needs, and capitalizes on opportunities available to Regis Catholic Schools. Regular members of the Finance Committee include the Dean, supporting Pastors, the Regis Catholic Schools President, the Regis Catholic Schools Controller, and one representative from each supporting parish.

REGIS CATHOLIC SCHOOLS FOUNDATION

The Regis Catholic Schools Foundation, Inc. is a tax exempt, charitable corporation with the purpose of providing financial support to Regis Catholic Schools. The Regis Catholic Schools Foundation is led by a Chairperson and a Board of Directors and is an independent organization. The school system and the Regis Catholic Schools Foundation work together with a sense of shared responsibility to ensure the viability, sustainability, and growth of Regis Catholic Schools.

"Choosing Regis Catholic Schools for our daughter was the best decision we could have made for her education. We enjoy knowing that she benefits from a smaller-sized class, which encourages her to develop lasting and meaningful relationships with her peers and teachers. We know that while she is at school, she is treated like a valued member of a family and she receives a quality education that focuses on her mind, body, and spirit."



Nicole Meldahl | Parent

2026-27 Tuition Rates

3 YEAR OLD PRESCHOOL

(ST. MARY'S ELEMENTARY SCHOOL) **\$1,488/Year (\$124/Month)**

HALF-DAY 4K PROGRAM

(ST. MARY'S ELEMENTARY SCHOOL) **\$2,256/Year (\$188/Month)**

FULL-DAY 4K PROGRAM

(ST. JAMES ELEMENTARY SCHOOL) **\$4,920/Year (\$410/Month)**

ELEMENTARY (GRADES K-5) **\$5,016/Year (\$418/Month)**

ADDITIONAL STUDENT | **\$4,616**

MIDDLE SCHOOL (GRADES 6-8) **\$5,460/Year (\$455/Month)**

ADDITIONAL STUDENT | **\$5,060**

HIGH SCHOOL (GRADES 9-12) **\$7,812/Year (\$651/Month)**

ADDITIONAL STUDENT | **\$7,212**

NON-PARISH MEMBER FEE: **\$1,200 Per Family**

The non-parish fee applies to K-12 families who are not registered members of a parish that supports a Catholic school. Parish membership is verified on an annual basis. The fee will be waived for new families the first year. We are able to waive the non-parish member fee for members of our supporting parishes thanks to direct subsidies from these parishes.

Beginning with the second year of enrollment, families are responsible for this fee if not a supporting parish member. If you feel that you cannot afford this fee, we encourage you to apply for the Regis Catholic Schools St. Benedict Tuition Assistance Scholarship.

FAMILY FEE: **\$250 Per Family**

Families can earn credit towards the fee by purchasing Scrip gift cards. The remaining balance owed will be invoiced. A \$25 late fee will be added if received after the due date.

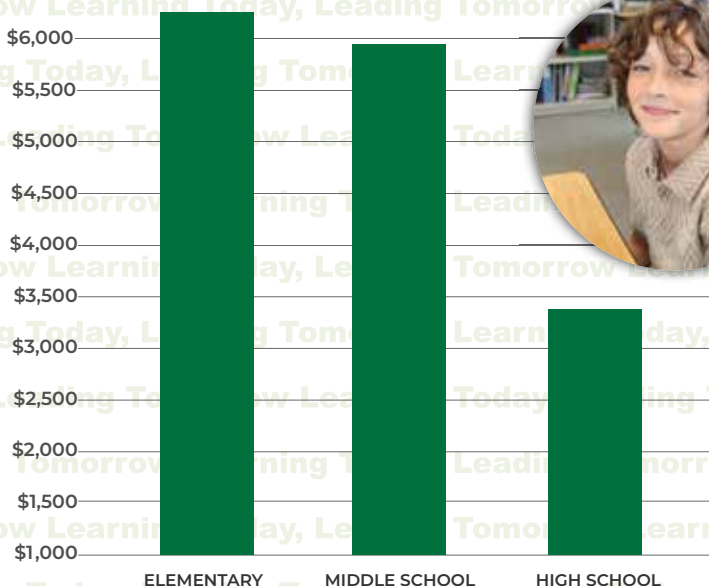
Co-curricular activities and athletics have participation fees. If your child participates in any activity with an additional fee, you will be given instructions on how to pay the fee. Participation fees must be paid in full before your child can participate in the activity.

Tuition, yearbook, and graduation fees are all included in the tuition rates listed above. Tuition and the Non-Parish Member Fee (if applicable) will be billed before the school year begins.



Cost of Education

**AVERAGE COST TO EDUCATE
EACH STUDENT = \$11,256**



2026-27 TUITION GAP

ELEMENTARY (K-5) | \$6,240

MIDDLE SCHOOL (6-8) | \$5,796

HIGH SCHOOL (9-12) | \$3,444

Because the tuition rates our families pay does not cover the entire cost to educate each student, we must bridge that gap through direct subsidy from our supporting parishes and private donations. We thank our generous supporters for helping us keep our tuition increases to a minimum.



ALL TUITION ARRANGEMENTS ARE MADE THROUGH THE REGIS CATHOLIC SCHOOLS CENTRAL OFFICE. ANY QUESTIONS SHOULD BE DIRECTED TO OUR ENROLLMENT & TUITION COORDINATOR AT (715) 830-2273, EXT. 1404.

FACTS TUITION MANAGEMENT

Regis Catholic Schools utilizes the FACTS Tuition Management Company to manage the collection of tuition and fees. The FACTS Tuition Management Company allows families access to view their account balance, review transaction history, receive payment reminders, and set up automatic payments via credit card or automatic bank draft.

Tuition Payment Options:

1. Payment in Full | No Plan Fees
2. Two Payment Plan | \$15 Plan Fee
3. Quarterly Payment Plan | \$50 Plan Fee
4. 10 Month Payment Plan | \$50 Plan Fee
5. 12 Month Payment Plan | \$50 Plan Fee
6. Weekly Payment Plan | \$50 Plan Fee

To ensure consistent and high-quality services for all students and families, the following tuition policy applies to all PreK-12 students enrolled at Regis Catholic Schools.

It is the expectation of Regis Catholic Schools that each family will select a payment plan in our tuition management system (FACTS) no later than the first day of school for each academic year. Families who do not select a payment plan will be given reminders via email until October 1st. Families who still have not selected a payment plan, paid tuition in full, or have not communicated with the Enrollment & Tuition Coordinator regarding their payment preferences will be automatically enrolled in an invoice plan with a one-payment due date of November 1st. If this balance is not paid in full by the beginning of the priority enrollment period, families may not be eligible for priority enrollment.

Payment Policy

"I attended Regis since kindergarten and I loved every year ever since. Not only do I love the community, I also love and appreciate the staff and the hard work they put into giving me a fantastic education I could not find anywhere else. If you're looking for success, it starts at Regis!"

Carly B. | Class of 2025

It is further expected that all tuition and fees will be paid in full no later than June 30 of each academic year. The following steps will be taken for those families with unpaid balances, including FACTS processing fees:

- 1.) At the end of June, the family will receive written notice that their account is past due, along with a copy of this policy. If the family has children enrolled in the Regis or Genesis Child Care Program, the students will not be allowed to attend until the balance is paid in full.
- 2.) If there is still a balance by July 31, the student(s) will not be permitted to participate in child care, co-curricular activities, or attend class in the fall until the balance is paid in full.
- 3.) If the balance is paid by August 31, the student(s) can re-enroll and will be eligible to participate in co-curricular activities. Students in the family who were previously enrolled in child care will need to re-enroll.
- 4.) Families not returning to Regis Catholic Schools for the next academic year will have their account turned over to a collection agency as of September 1.

Note: Families with split tuition responsibility amongst separate households need to communicate the tuition responsibility to the Enrollment & Tuition Coordinator. Communication must include appropriate legal documentation of this plan.

Any grievance by a parent/guardian against the school or its employees shall be resolved through Diocesan Administrative Recourse. (See Diocesan Policy DSP 1391/1392)

WE ARE COMMITTED TO HELPING ALL FAMILIES SEND THEIR CHILDREN TO REGIS CATHOLIC SCHOOLS, REGARDLESS OF FINANCIAL ABILITY.

MORE THAN 50% OF OUR STUDENTS RECEIVE SOME FORM OF FINANCIAL ASSISTANCE.

ST. BENEDICT TUITION ASSISTANCE SCHOLARSHIP

The St. Benedict Tuition Assistance Scholarship is a needs-based financial award. Families in need of tuition assistance are encouraged to apply for the St. Benedict Scholarship through FACTS Grant & Aid each year. In recent years, Regis Catholic Schools awarded approximately \$95,000 in tuition assistance via the St. Benedict Tuition Assistance Scholarship.

(Apply February 2 - April 20, 2026)

REGIS CATHOLIC SCHOOLS SCHOLARSHIPS

A Regis Catholic Schools Scholarship guide is published each year and includes opportunities for PreK-12th grade scholarships. Regis Catholic Schools is very fortunate to have many generous donors who make these scholarships available.

(Apply February – April)

TAX DEDUCTIONS

The state of Wisconsin offers an income tax deduction for K-12 school tuition expenses.

SCRIP PROGRAM

Scrip is a gift card fundraising program. Regis Catholic Schools buys gift cards from local and national vendors at a discount and sells them at face value. The profits are split 50/50 between you and Regis Catholic Schools. Your profit goes toward your \$250 annual family fee. If you exceed your family fee, any additional amount goes toward tuition for next year!

Please contact our Enrollment & Tuition Coordinator at (715) 830-2273, ext. 1404 to discuss your options.

Affordability

REGIS CATHOLIC SCHOOLS OFFERS A TUITION REFERRAL BONUS TO THANK OUR CURRENT FAMILIES FOR SHARING THEIR EXPERIENCE WITH OTHERS.

PROGRAM DETAILS

- Current families referring new families to RCS are eligible for a one-time tuition credit of \$500 per referred family, plus an additional \$250 for every additional student the new family enrolls for the same school year. For example, if the new family you refer to enroll at Regis Catholic Schools enrolls three (3) new students, the current (referring) family would receive the following tuition credit: \$500 (First New Student) + \$250 (Second New Student) + \$250 (Third New Student) (\$1,000 TOTAL)
- The new family referred to enroll at RCS will also receive a one-time tuition credit of \$500.
- These incentives will be awarded as tuition credits. There is no cash value and no carryover of any credit that exceeds your family's annual tuition bill.
- Preschool is not eligible to receive the tuition credit. The current RCS family must have at least one (1) child enrolled in K-12 for the upcoming school year to be eligible for any credits.
- This program is for referral of new families who have students eligible for K-12 that have not been enrolled with RCS for at least one year.

The family new to Regis Catholic Schools must complete and submit our Referral Form to allow us to properly credit the Tuition Referral Bonus.

Wisconsin Parental

THE WISCONSIN PARENTAL CHOICE PROGRAM

(WPCP) ALLOWS FAMILIES WITHIN THE INCOME REQUIREMENTS TO APPLY FOR A TUITION VOUCHER. IF YOUR CHILD IS SELECTED, HE/SHE WOULD RECEIVE FREE TUITION TO ATTEND REGIS CATHOLIC SCHOOLS DURING THE 2026-27 SCHOOL YEAR.

Beginning with the 2026-27 school year, the Wisconsin Parental Choice Program application periods have been changed and expanded. Our full-day 4K program at St. James Elementary School and our half-day 4K program at St. Mary's Elementary School are now included in the Wisconsin Parental Choice Program.

Open Application Periods 2026-27 Wisconsin Parental Choice Program		
OPEN DATE	END DATE	DOCUMENT RANGE *
February 2, 2026	February 20, 2026	November 2, 2025 - February 20, 2026
March 1, 2026	March 20, 2026	December 1, 2025 - March 20, 2026
April 1, 2026	April 20, 2026	January 1, 2026 - April 20, 2026
May 1, 2026	May 20, 2026	February 1, 2026 - May 20, 2026
June 1, 2026	June 22, 2026	March 1, 2026 - June 22, 2026
July 1, 2026	July 20, 2026	April 1, 2026 - July 20, 2026
August 1, 2026	August 20, 2026	May 1, 2026 - August 20, 2026


* All documents submitted for proof of residency or income need to be dated within the dates above to be accepted.



Choice Program

2026-27 YEARLY INCOME LIMITS & FAMILY SIZE (APPROXIMATELY 220% OF THE FEDERAL POVERTY LEVEL)

Family income includes the income of the student's parent(s)/ legal guardian(s) that reside in the same household as the student applicant. If the student's parents/legal guardians that reside in the same household are married, their income is reduced by \$7,000 when determining income eligibility for the program. Family size includes parents/legal guardians and their children by birth, marriage or adoption that reside in the same household as the student applicant.

Family Size	Maximum Yearly Income	For each additional family member, add \$12,100. <i>*As determined by the Adjusted Gross Income (AGI) on the federal income tax return for the prior calendar year (2025 for the 2026-27 school year).</i>	 LEARN MORE
1	\$34,430		
2	\$46,530		
3	\$58,630		
4	\$70,730		
5	\$82,830		
6	\$94,930		

If your family meets the income requirements, you may apply for the Wisconsin Parental Choice Program. NOTE: If your child is already attending Regis Catholic Schools during the 2025-26 school year and is NOT already in the program, the student must be entering kindergarten, 1st, or 9th grade in order to apply. Incoming transfer students in any grade are eligible to apply.

STEP 1 | Complete Online Application

<https://sms.dpi.wi.gov/ChoiceParent/>

STEP 2 | Submit Income Verification and Residency Documentation to the Regis Catholic Schools Central Office

(2728 Mall Drive, Ste 200 | Eau Claire) OR via email to Kayla Bahnub, Enrollment & Tuition Coordinator, at kbahnub@RegisCatholicSchools.com. Proof of Residency documents must be dated according to the chart on the previous page and must match the application exactly in order to be accepted.

YOUR ONLINE APPLICATION IS CONSIDERED INCOMPLETE UNTIL ALL REQUIRED DOCUMENTATION IS SUBMITTED.

Families are responsible for completing the required application and providing supporting documentation within the open application periods.

Wisconsin Parental

Commonly Asked Questions

Q: WHAT IS A TUITION VOUCHER?

A: Students who are residents of Wisconsin, outside of the Milwaukee Public School and Racine Unified School Districts, with an Adjusted Gross Income at or below approximately 220% of the federal poverty level are eligible to receive a voucher to attend a private or religious school through the Wisconsin Parental Choice Program. Those chosen for a voucher do not have to pay any tuition, books, enrollment fees, or family fees at Regis Catholic Schools.

Q: WHO MAY APPLY?

A: Any public school student in grades 4K-12 who meets the income requirements; Any student who in the previous school year was not enrolled in school; Any non-voucher student currently attending a private or religious school may apply to the program only when entering kindergarten, 1st, and 9th grade; Any student who participated in the Milwaukee Parental Choice Program OR Racine Parental Choice Program the previous school year.

Q: WHAT IF MY INCOME INCREASES IN SUBSEQUENT YEARS?

A: The “once in, always in” provision means your child keeps his or her voucher even if family income rises. Family income is determined for each student in the year they enter the program. Families could have some children qualify and others that do not qualify depending on family income in the year each child seeks entry into the program. The “once in, always in” provision applies only if a student continues to attend a school in the Wisconsin Parental Choice Program and does not voluntarily leave the program.

Q: CAN I BE CHARGED ADDITIONAL FEES?

A: You can be charged reasonable fees for:

- Personal items such as towels, gym clothes, or uniforms
- Social and extracurricular activities as long as the activity is not a part of the required curriculum
- Musical instruments
- Meals
- High school classes not required or credited for graduation (Includes dual-credit course costs)
- Transportation
- Before-school and after-school child care

Choice Program

Income Verification

Documentation required will be based on your online application. When you submit your online application, you have the choice of how you want Regis Catholic Schools to verify your income. Please be sure the information you provide matches your online application.

Option #1: DOR (Department of Revenue) Method (Recommended)

All parent(s)/guardian(s) listed on the application must provide their social security number (SSN) or taxpayer ID number in order for income to be verified by the DOR. When using this method, please be certain you meet income eligibility for both 2024 and 2025 or your application could consequently be determined ineligible.

Option #2: DPI (Department of Instruction) Method

The DPI income determination method is based on the 2025 income. You will need to enter the adjusted gross income on the return (1040, 1040A, or 1040EZ) in your online application. PROVIDE RCS A COPY OF YOUR 2024 FEDERAL TAX RETURN 1040 (FIRST TWO PAGES ONLY). COPY MUST BE SIGNED AND DATED (BOTH TAXPAYERS SIGNATURES NEEDED WHEN FILING JOINTLY). The amount entered into the online application must match the income documentation provided to RCS.

RESIDENCY DOCUMENTS

1. Utility Bills: Water, Gas, Electric, Cable, Satellite or Landline Phone (Cell Phone Bills NOT Acceptable)
2. Wage Statement or W2 Year-End Earnings Statement
3. Lease Agreement (Signed and Dated)
4. Governmental Correspondence: Property Tax Bill, Supplemental Security Income "SSI", Wisconsin Works "W2", FoodShare, United States Postal Service, Housing Assistance Letter. For the full list of accepted document types, please visit https://dpi.wi.gov/sites/default/files/imce/parental-education-options/Choice/Student_Application_Webpage/Residency_Documentation_Guidance_for_Parents_25-26.pdf.

ONLY THE ABOVE LISTED DOCUMENTS ARE ACCEPTABLE. WE WILL NOT ACCEPT DOCUMENTS OUTSIDE OF THIS LIST.

All residency documentation must be dated within three (3) months of when you submit your online application. The full name, street address, including city, state, and zip code must match your application. Please see the application periods chart to determine the proper date range for supporting documentation.

Admission &

REGIS CATHOLIC SCHOOLS IS DEDICATED TO EDUCATING STUDENTS OF ALL FAITHS IN A CATHOLIC, CHRIST-CENTERED ENVIRONMENT. WE ARE UNITED BY OUR CORE VALUES OF LIVING FAITH, ACCEPTING RESPONSIBILITY, PROMOTING TEAMWORK, ACHIEVING EXCELLENCE, AND INSPIRING LEADERSHIP. ALL FAMILIES WHO IDENTIFY WITH THESE CORE VALUES ARE INVITED TO ENROLL IN OUR SCHOOLS. REGIS CATHOLIC SCHOOLS HAS THE FOLLOWING ADDITIONAL ADMISSIONS POLICIES AND PROCEDURES:

- A.** Students are accepted without regard to race, color, or national or ethnic origins. Children of all faiths are welcomed and expected to share in religious education.
- B.** Enrollment for the next school year will open in January. The specific dates will be announced via school communications/calendars and on the Regis Catholic Schools website.
 - a.** Current RCS families will be provided a priority enrollment period in January to re-enroll for the coming school year. Current families will have the opportunity to enroll current students and siblings (new students) during this time.
 - i.** Once this priority enrollment period has closed, current RCS families are no longer guaranteed enrollment within the system.
 - b.** Following the priority enrollment period for current RCS families, enrollment for the next school year will open for families new to the Regis Catholic Schools system.

NOTICE | Regis High School students will not be allowed to register for dual-credit courses until their Regis Catholic Schools enrollment process has been completed for the coming school year.

After the priority enrollment period for current RCS families has ended, classes will be filled based on the date of application under the following order of priority.

ORDER OF PRIORITY

If there are more enrollments than available grade level capacity, the following will be considered in order of priority:

- 1.** Children of Regis Catholic Schools employees.

Enrollment Policy

2. Active members of our supporting parishes (Immaculate Conception, Sacred Heart/ St. Patrick, St. James the Greater, St. Mary's, St. Olaf, Newman Parish at UWEC) who are practicing Catholics.
 3. Kindergarten through 4th grade students wishing to transfer from one RCS elementary to another.
 4. Students at one of our RCS tuition-based preschool or 4K programs.
 5. Children enrolled at one of our RCS Child Development Centers.
 6. Children enrolled in a RCS-based Eau Claire Area School District 4K program.
 7. Transfer from another Catholic school outside of the RCS system.
- C. Wisconsin state guidelines for age and grade level will be followed in the admissions process.
- D. An age-appropriate development and/or educational assessment by the principal and/or faculty may be given to students entering the school. This assessment assists in the placement of a child. Admission requirements include but are not limited to: review of previous school records, standardized tests, a meeting with the Enrollment & Tuition Coordinator and/or member of the RCS Administrative Team, a school tour, and classroom visitation.
- E. As a private school, the academic setting of mind, body, and spirit may not be designed to accommodate the needs of all children. The admission process facilitates determining if RCS can provide a suitable educational program for the child seeking admission. We do not have a special education program/educational services. If your child has special education needs, please talk to the building administrator for more information on what resources may be available.
- F. All transfer students are considered probationary students for the first semester of attendance. During this time, grades, attendance, and discipline are monitored, and the student's status is reevaluated at semester end, at which time the provisional status may be removed.



Admission &

G. Admission of students in one year does not guarantee readmission of that student in subsequent years. RCS may decide not to readmit a student in a subsequent year for any reason unless prohibited by Federal or State Civil Rights laws.

H. Class size is guided by the Enrollment and Class Offerings Policy and determined by the President. When a class is at capacity, all waiting list requests will continue to be considered by application date for future admission.

I. Students accepted into the Wisconsin Parental Choice Program (School Voucher) who are new to RCS cannot displace other currently enrolled students from a building. Accommodations will be made to make sure there is room for the new students to be in a grade-appropriate class.

Regis Catholic Schools respects the dignity of God's children. All children have a right to a quality education. In addition to the pursuit of academic excellence, a Regis education will support their relationship with God and guide them to live and work with others in accord with Gospel values.

NON-DISCRIMINATION POLICY

The educational institutions of the Catholic Diocese of La Crosse are subject to the limitations of the Title VII of the Civil Rights Act of 1964 as amended, Title IX of the Education Amendments of 1972, the Age Discrimination and Employment Act, the Equal Pay for Equal Work Act, the Rehabilitation Act of 1973, and the Wisconsin Fair Employment Practices Act and do not discriminate on the basis of race, religion, color, sex, national origin, age, handicap, arrest and/or conviction record, marital status or sexual preference, except as permitted by law.

HOME SCHOOL/STUDENT TRANSFERS

All transfer students must meet our Regis Catholic Schools academic and behavior standards. The principal will recommend the academic standing for each transfer or home school student. Home

Enrollment Policy

school students will be placed in the grade where their age chronologically fits unless evidence is shown via standardized tests or some other objective instrument that the student should be advanced a grade or should begin instruction at a lower grade.

ENROLLMENT PROCEDURES

Enrollment is handled through the Regis Catholic Schools Central Office, located at 2728 Mall Drive, Ste 200 in Eau Claire, Wisconsin. A student is not considered enrolled until the enrollment form, enrollment fee, and transfer form (when applicable) have been submitted and processed.

CUSTODY AGREEMENT

As a condition of enrollment, a copy of that portion of the custody decree that indicates who has primary placement and a copy of the current custody agreement must be on file at the school your child attends. Both parents have a legal right to be listed in the school directory, receive school progress reports and report cards, participate in parent/teacher conferences, and communicate with school teachers and administration unless specifically stated differently in the custodial agreement.

Permission from all custodial parents is required to complete the enrollment process.

TUITION REIMBURSEMENT (STUDENT WITHDRAWAL)

Our operating budget is determined, in part, by the tuition paid for enrolled students. In the case of a student's early withdrawal - whether initiated by the family or by the Regis Catholic Schools administration - tuition will be charged through the end of the academic quarter in which the student is enrolled. If a student withdraws before the first day of school, a full refund will be given, minus any enrollment or FACTS plan fees. Any other applicable fees will be due in full for any student that withdraws after the start of the school year. Fees will not be prorated.

Dress Code

A dress code promotes a positive school atmosphere, which emphasizes academics and promotes good behavior.

Dress codes have proven to increase student achievement by encouraging them to concentrate more on their studies and less on their wardrobe.



Our Elementary Dress Code (Immaculate Conception Elementary School, St. James Elementary School & St. Mary's Elementary School) and our Regis Campus Dress Code (Regis Middle School & Regis High School) are both available online.

RegisCatholicSchools.com/parents-students/dress-code/

Regis Catholic Schools partners with Lands' End to offer dress code-approved items. Parents can also easily find dress code-approved clothing items at many major retailers, including Old Navy, The Children's Place, Kohl's, etc.

"Regis offers a personal and intimate experience for both students and their families. There is the opportunity to connect and build relationships with others who share the same values and beliefs."

Tim & Meagan Bauer | Parents



Important Dates

January 26, 2026

- **Priority Enrollment Opens (Current Regis Families)**
Register your student(s) and submit the non-refundable \$150 enrollment fee.

February 1, 2026

- **Priority Enrollment Closes (Current Regis Families)**

February 2, 2026

- **Enrollment Opens (New Families)**
Register your student(s) and submit the non-refundable \$150 enrollment fee.

February 2, 2026

- **Wisconsin Parental Choice Program Enrollment Opens**
Eligible families must apply online at <https://sms.dpi.wi.gov/ChoiceParent/> and turn in the required documentation to the Regis Catholic Schools Central Office.
- **Regis Catholic Schools St. Benedict Tuition Assistance Scholarship Application Opens**
Apply through FACTS Grant & Aid at <https://online.factsmgmt.com/signin/3FDS3> and submit required income documentation and fee to FACTS Grant & Aid by April 20, 2026.

Questions? Contact the Enrollment & Tuition Coordinator at (715) 830-2273, ext. 1404.

What's Next?

APPLY ONLINE

RegisCatholicSchools.com/admissions/online-enrollment/

ENROLLMENT CHECKLIST

Enrollment is processed at the Regis Catholic Schools Central Office, located at 2728 Mall Drive, Ste 200 in Eau Claire.

✓ **Enroll your child online.**

✓ **Pay non-refundable \$150 enrollment fee** during the online enrollment process OR pay by check or cash at the Regis Catholic Schools Central Office.

✓ **Kindergarten + 4K Students** | Proof of age (birth certificate) must be presented at the Regis Catholic Schools Central Office. Student must be 5 by September 1.

✓ **Transfer Students** | Before your enrollment request can be processed, you must complete a Pre-Admission Inquiry Request Form allowing us to review your child's current school records. Additional placement testing may be required. Please contact our Enrollment & Tuition Coordinator at (715) 830-2273, ext. 1404 for more information.

You will receive an enrollment confirmation email upon completion of all of the steps applicable to you.



Our Facilities



GENESIS CHILD DEVELOPMENT CENTER

418 N Dewey Street, Eau Claire, WI 54703 | (715) 830-2275

REGIS CHILD DEVELOPMENT CENTER

2114 Fenwick Avenue, Eau Claire, WI 54701 | (715) 830-2274

IMMACULATE CONCEPTION ELEMENTARY SCHOOL

1703 Sherwin Avenue, Eau Claire, WI 54701 | (715) 830-2276

ST. JAMES ELEMENTARY SCHOOL

2502 11th Street, Eau Claire, WI 54703 | (715) 830-2277

ST. MARY'S ELEMENTARY SCHOOL

1828 Lynn Avenue, Altoona, WI 54720 | (715) 830-2278

REGIS MIDDLE SCHOOL

2100 Fenwick Avenue, Eau Claire, WI 54701 | (715) 830-2272

REGIS HIGH SCHOOL

2100 Fenwick Avenue, Eau Claire, WI 54701 | (715) 830-2271

Regis Catholic Schools is accredited by
Wisconsin Religious and Independent Schools
Accreditation (WRISA) for grades K-12.



CENTRAL OFFICE

2728 Mall Drive, Ste 200
Eau Claire, WI 54701

P: (715) 830-2273

F: (715) 835-4658

CentralOffice@RegisCatholicSchools.com



facebook.com/RegisCatholicSchools



instagram.com/regiscatholicschools
instagram.com/regis.ramblers

#WeAreRegis

#RamblerNation